

PROJECT NAME	2123 RTE. 500 W. - EMBRUN, ON - CAMBRIDGE PUBLIC SCHOOL ADDITION - ARCHITECTURAL SERVICES - UCDSB RFQ #25-036
PROJECT NO.	GWAL 2025-385
DATE	APRIL 24, 2026
ADDENDUM NO.	E1

The following additions, deletions & revisions form part of the drawings and specifications for the above-referenced project:

GENERAL

Responses to Tender Questions

Q2: Please provide a list of base building contractors for systems such as BAS, CCTV, fire alarm, sprinkler, and security?

A2: The base building fire alarm contractor is Tremblay Fire Solutions.
No base building CCTV or security contractor has been identified by the school at this time.

Q5: Will the connection of hydro and gas be covered by owner?

A5: The Hydro One service upgrade has been coordinated, and payment has been issued in accordance with the Offer to Connect agreement. Refer to Drawings E005 and E006 for the delineation of Hydro One and electrical contractor responsibilities.

Q16: Does the UCDSB have a prequalified list for the following trades. If so please provide this list?

1. Structured cabling
2. Security system (Intrusion/access control/CCTV)
3. Paging system (Bogen)

A16: UCDSB does not maintain a pre-qualified contractor list for the trades noted above. Contractors shall be qualified and demonstrate experience on projects of similar size and complexity.

Q19: Please advise communications cabling type, including preferred or mandatory manufacturer if applicable.

A19: Refer to issued for tender specifications, Section 27 10 10, for communications cabling requirements, including acceptable manufacturers.

Q20: Please advise the communications racking requirements.

A20: Refer to issued for tender specifications, Section 27 10 10, for communications racking requirements.

Q21: Please advise communications backbone requirements.

A21: Refer to issued for tender specifications, Section 27 10 10 for communications cabling requirements. Drawing E011 indicates the required backbone extension to the existing school IT infrastructure. Contractor to coordinate termination and integration with existing systems.

GENERAL

Q22: Please advise communications patching requirements.

A22: Refer to issued for tender specifications, Section 27 10 10 for communications patching requirements.

Q32: For solar, please confirm the DC system size is supposed to be 45 kW DC; per drawing E009, it shows 73 x 500 W modules, which will only be 36.5 kW DC. What DC system size should be used for the bid?

A32: Bidders shall base their pricing on the performance requirements outlined in the issued for tender specifications, Section 26 32 10. Drawing E009 is provided for reference to indicate a representative system layout. Final module count and configuration may vary as required to meet the specified performance criteria, with all associated costs to be included in the bid.

SPECIFICATIONS

N/A

DRAWINGS

All changes have been identified with revision clouds.

1. Reference Updated Drawing E002

- .1 Addition of existing classroom portables and associated underground services.
- .2 Updated Construction Phasing. Coordinate work with the Contract Manager to ensure project deliverables are maintained for each phase.

2. Reference Updated Drawing E003

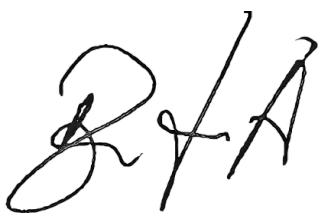
- .1 Additional demolition scope for classroom portables and associated underground services.

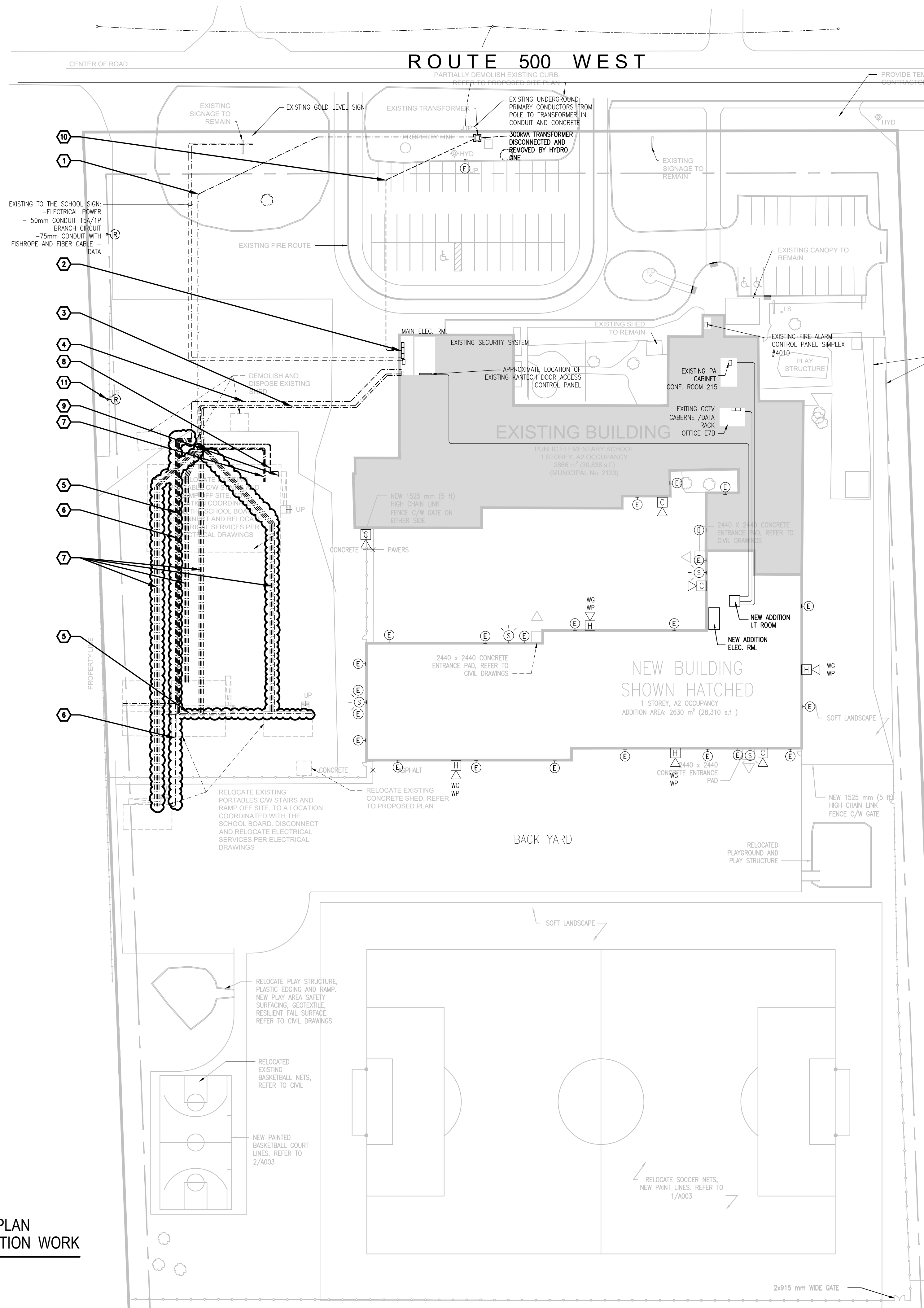
3. Reference Updated Drawing E004

- .1 Updated underground services for future portables.

4. Reference Updated Drawings E007, E008, E009

- .1 Updates to existing, demolition, and new single-line diagrams for classroom portable infrastructure.

ENCLOSURE(S)	Drawings E002 to E004 & E007 to E009
ISSUED BY	DISTRIBUTION
Diego Agudelo, C.Tech./po 	Nathalie Routhier (N45 Architecture Inc.) Dorothy Lee (N45 Architecture Inc.) Steve Hamilton (GWAL - Mechanical) Petar Azdajic (GWAL - Mechanical) Divyakant (Raj) Vyas (GWAL - Electrical) Diego Agudelo (GWAL - Electrical) Khaled Alhariri (GWAL - Electrical) Yves Lavictoire (GWAL - Electrical)

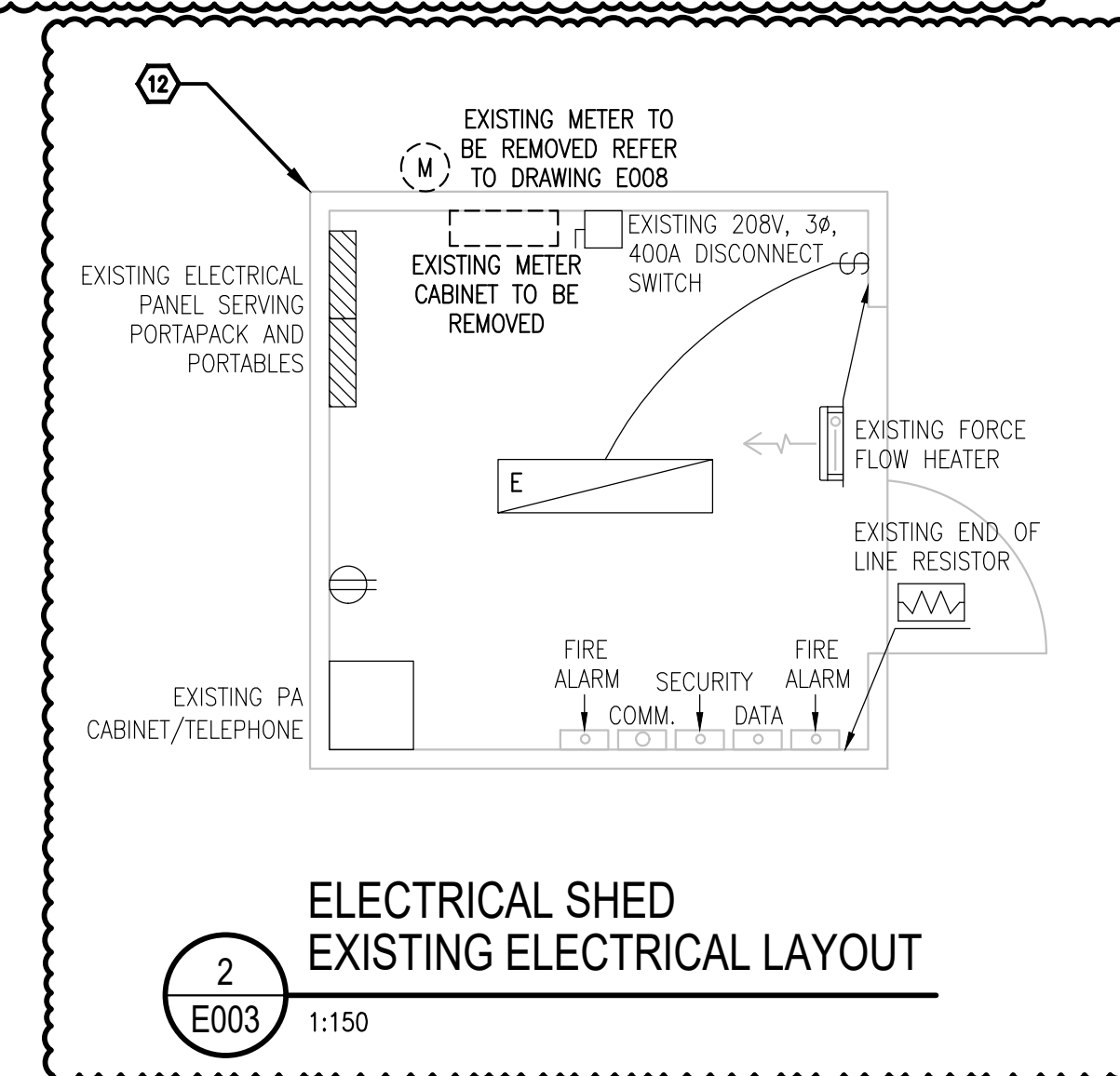


GENERAL NOTES

1. DRAWINGS ARE TO BE READ IN CONJUNCTION WITH SPECIFICATIONS, ARCHITECTURAL, MECHANICAL, CIVIL & LANDSCAPING DRAWINGS.

DRAWING NOTES

- 1 DISCONNECT AND REMOVE EXISTING UNDERGROUND SECONDARY CONDUCTORS FROM TRANSFORMER TO SERVICE PORTABLES BUILDING.
- 2 DISCONNECT AND REMOVE EXISTING MAIN ELECTRICAL SERVICE SWITCH 800A, 120/208V, 3PH, 4W.
- 3 DISCONNECT AND REMOVE ALL EXISTING UNDERGROUND FIRE ALARM, DATA AND COMMUNICATIONS CABLING AND CONDUIT SERVING PORTABLES AND PORTAPACK.
- 4 DISCONNECT AND REMOVE ALL EXISTING UNDERGROUND ELECTRICAL SECONDARY CONDUCTORS & CONDUIT TO SERVICE PORTABLES BUILDING REFER TO DRAWING E006.
- 5 DISCONNECT AND REMOVE EXISTING FEEDERS TO PORTABLE CLASSROOMS 1, 2 & 5.
- 6 DISCONNECT AND REMOVE EXISTING FEEDERS TO PORTABLE CLASSROOMS 3, 4 & 6.
- 7 DISCONNECT AND REMOVE UNDERGROUND FIRE ALARM, DATA AND COMMUNICATIONS CABLING AND CONDUIT TO PORTABLE CLASSROOMS 1, 2, 3, 4, 5, 6 & PORTAPACK.
- 8 DISCONNECT AND REMOVE UNDERGROUND SECONDARY CONDUCTORS FROM SERVICE BUILDING TO PORTAPACK BUILDING.
- 9 DISCONNECT AND REMOVE FEEDER AND CONDUIT FROM MAIN DISCONNECT SWITCH TO EXISTING DISTRIBUTION PANEL DP-1.
- 10 DISCONNECT AND REMOVE EXISTING UNDERGROUND SECONDARY CONDUCTORS FROM 300KVA PAD-MOUNT TRANSFORMERS TO EXISTING SCHOOL SWITCHBOARD DP-1.
- 11 TYPICAL: DISCONNECT AND REMOVE EXISTING POLE MOUNTED LIGHT FIXTURES AS INDICATED.
- 12 RELOCATE EXISTING ELECTRICAL/COMMUNICATION SHED INFRASTRUCTURE, INCLUDING BUT NOT LIMITED TO DISTRIBUTION EQUIPMENT, JUNCTION BOXES, CONDUITS, WIRING, TELECOMMUNICATIONS EQUIPMENT, DATA RACKS, FIRE ALARM, SECURITY, AND PAGING SYSTEMS, TO THE NEW LOCATION AS INDICATED ON DRAWING 1/E004. EXTEND, MODIFY, AND RECONNECT ALL ASSOCIATED FEEDERS, BRANCH CIRCUITS, AND LOW-VOLTAGE SYSTEMS AS REQUIRED TO SUIT THE NEW LAYOUT. PROVIDE ALL ADDITIONAL CONDUIT, WIRING, TERMINATIONS, SUPPORTS, AND HARDWARE REQUIRED FOR A COMPLETE AND OPERATIONAL INSTALLATION. ENSURE ALL SYSTEMS ARE FULLY FUNCTIONAL UPON COMPLETION AND READY TO SERVE SIX (6) FUTURE PORTABLE CLASSROOMS. COORDINATE ALL WORK WITH EXISTING CONDITIONS AND OTHER TRADES.



ELECTRICAL SITEPLAN PHASE 2 - DEMOLITION WORK

1
E003

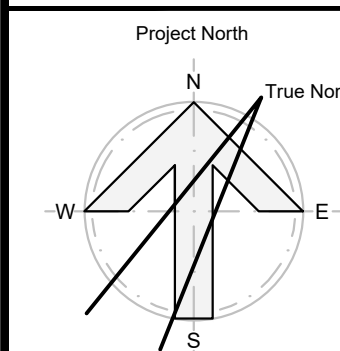
1:150

-	ISSUED FOR ADD-E1	2026-04-24
-	ISSUED FOR TENDER R2	2026-04-01
-	ISSUED FOR TENDER	2026-02-10
-	ISSUED FOR PERMIT	2025-12-10
-	ISSUED FOR CO-ORDINATION	2025-11-19
-	ISSUED FOR SITE PLAN	2025-10-31
-	ISSUED TO HYDRO ONE	2025-10-31
-	ISSUED FOR 80% REVIEW	2025-10-14
-	ISSUED FOR 50% REVIEW	2025-09-17
no.	revision	date

N45 ARCHITECTURE INC.
71 Bank Street, 7th Floor - Ottawa, Ontario, K1P 5N2
tel. 613.224.0095 fax 613.224.9811

UPPER CANADA DISTRICT
SCHOOL BOARD

CAMBRIDGE PUBLIC SCHOOL
2123 RTE 500 W
EMBRUN, ON



seal

drawing title
**SITEPLAN
PHASE 2 - DEMOLITION WORK**

scale AS SHOWN	drawn by K.A
date 2025	checked by D.V./ D.A
project number 2025-385	drawing number E003

CONTRACTOR TO VERIFY ALL DIMENSIONS AND
NOTIFY THE ARCHITECT OF ANY DISCREPANCIES
BEFORE WORK COMMENCES.

revision

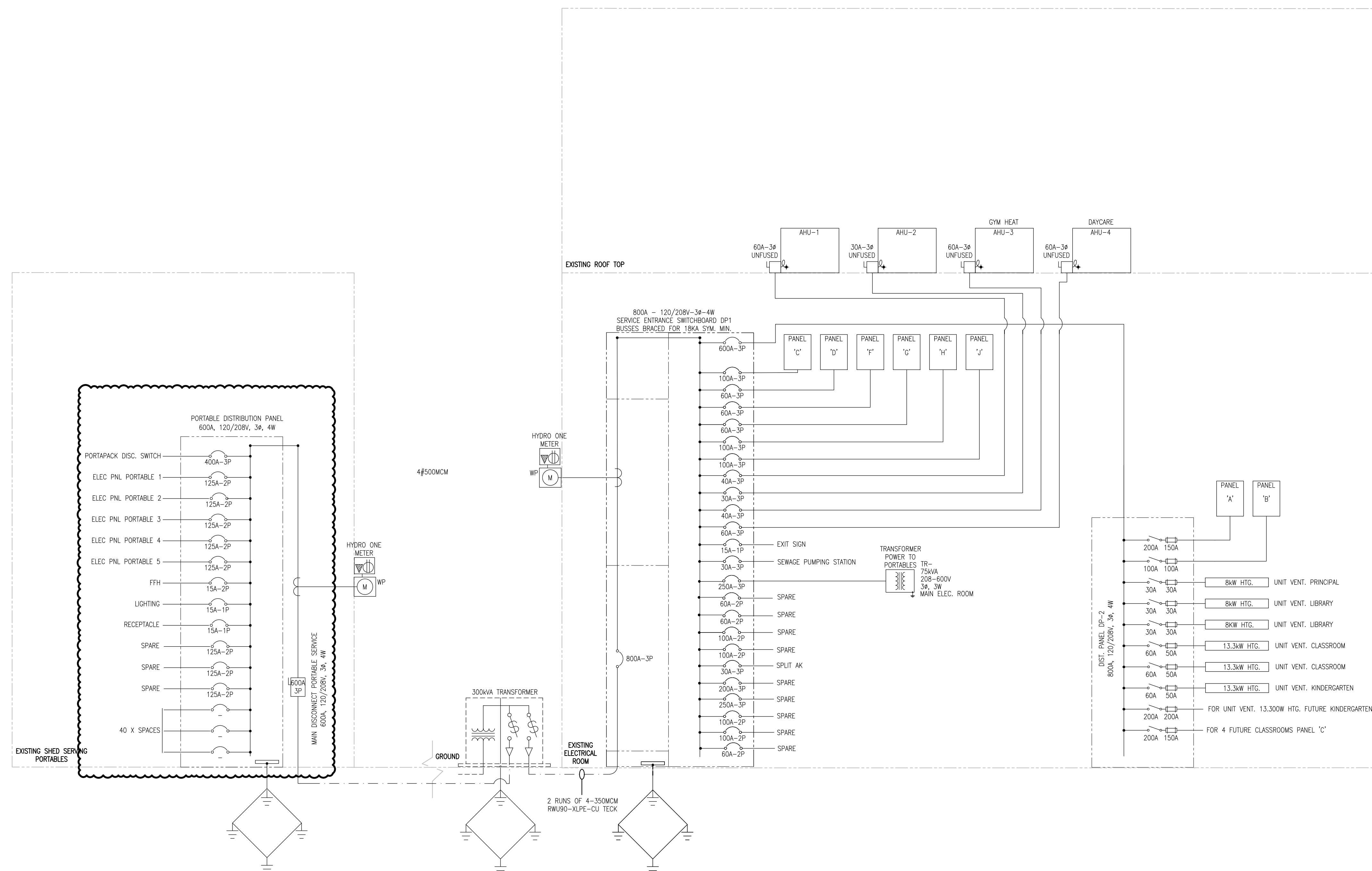
26

DO NOT SCALE DRAWINGS

N45 ARCHITECTURE INC.
71 Bank Street, 7th Floor – Ottawa, Ontario, K1P 5N2
tel. 613.224.0095 fax 613.224.9811

seal

26



DRAWING NOTES

1. TYPICAL:
DISCONNECT AIR HANDLING UNITS C/W WIRING AND CONDUITS AND MAKE SAFE. REFER TO ROOF PLANS FOR ADDITIONAL DETAILS.
2. DISCONNECT AND REMOVE THE MAIN SWITCHBOARD AS INDICATED AND MAKE SAFE. REFER TO DRAWING E007 FOR NEW REQUIREMENTS AND FLOOR PLAN FOR THE PROPOSED LOCATION.
3. DISCONNECT THE EXISTING FEEDER SERVING DISTRIBUTION PANEL DP2. EXTEND CONDUIT AND FEEDER AS REQUIRED TO ACCOMMODATE NEW SWITCHBOARD REQUIREMENTS. REFER TO NEW WORK.
4. SERVICE ENTRANCE TRANSFORMER TO BE DISCONNECTED AND REMOVED BY HYDRO ONE. DISCONNECT AND REMOVE GROUNDING AND SECONDARY FEEDERS BY FEEDERS BY ELECTRICAL CONTRACTOR. COORDINATE ALL RELATED WORK WITH HYDRO ONE. REFER TO SITE PLAN FOR ADDITIONAL DETAILS.
5. DISCONNECT AND REMOVE THE DISTRIBUTION BOARD C/W WIRING AND CONDUITS FOR THE PORTAPACK AND PORTABLES AS INDICATED. RETAIN FOR RE-USE IN THE NEW LAYOUT. REFER TO DRAWINGS E004 AND E009 FOR FURTHER DETAILS. SERVICE TO BE DISCONNECTED BY HYDRO ONE. COORDINATE WORK ON-SITE. PROVIDE TEMPORARY POWER REQUIRED DURING OUTAGE.

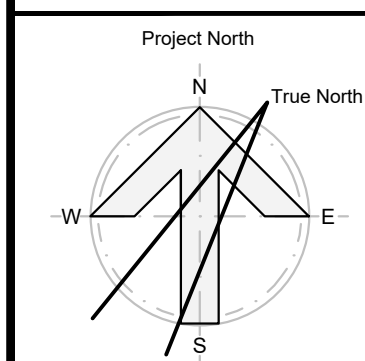
-	ISSUED FOR ADD-E1	2026-04-24
-	ISSUED FOR TENDER R2	2026-04-01
-	ISSUED FOR TENDER	2026-02-10
-	ISSUED FOR PERMIT	2025-12-10
-	ISSUED FOR CO-ORDINATION	2025-11-19
-	ISSUED FOR SITE PLAN	2025-10-31
-	ISSUED TO HYDRO ONE	2025-10-31
-	ISSUED FOR 80% REVIEW	2025-10-14
-	ISSUED FOR 50% REVIEW	2025-09-17

no.	revision	date
-----	----------	------

N45 ARCHITECTURE INC.
71 Bank Street, 7th Floor - Ottawa, Ontario, K1P 5N2
tel. 613.224.0095 fax 613.224.9811

UPPER CANADA DISTRICT
SCHOOL BOARD

CAMBRIDGE PUBLIC SCHOOL
2123 RTE 500 W
EMBRUN, ON



drawing title
**RISER DIAGRAM - PHASE 2
DEMOLITION WORK**

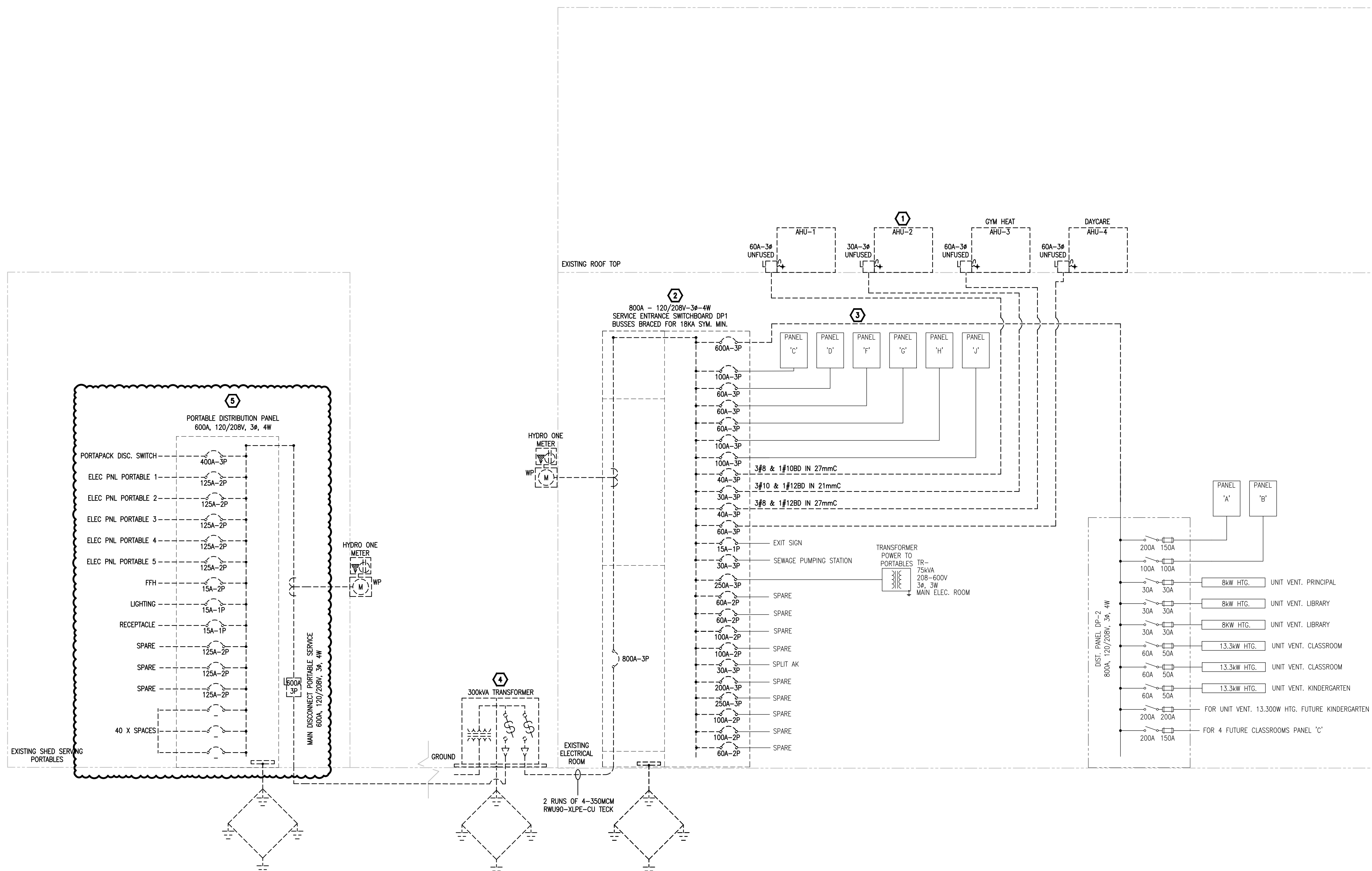
scale AS SHOWN	drawn by K.A
date 2025	checked by D.V/ D.A
project number 2025-385	drawing number E008

CONTRACTOR TO VERIFY ALL DIMENSIONS AND
NOTIFY THE ARCHITECT OF ANY DISCREPANCIES
BEFORE WORK COMMENCES.

revision

26

DO NOT SCALE DRAWINGS





N45 ARCHITECTURE INC.
71 Bank Street, 7th Floor – Ottawa, Ontario, K1P 5N2
tel. 613.224.0095 fax 613.224.9811

CAMBRIDGE PUBLIC SCHOOL
2123 RTE 500 W
EMBRUN, ON

